



**River to
Coast
Children's
Services**

Resources, Referrals, and Support / Recursos, Referencias, y Apoyo

Celebrating 40 years of caring!

707.869.3613

info@rccservices.org/www.rccservices.org

Sirviendo el oeste del Condado de Sonoma con

- ☑ Referencias para el Cuidado de Niños
- ☑ Recursos para los Niños y sus Familias
- ☑ Apoyo para los Proveedores del Cuidado de Niños
- ☑ Ayuda Monetaria para el Cuidado de Niños
- ☑ Programa de Materiales de Emergencia
- ☑ Gimnasio para Niños
- ☑ Programa de Asientos de Seguridad

Serving west Sonoma County with:

- ☑ Help paying for child care for eligible families
- ☑ Referrals for child care & community resources
- ☑ Support and resources for child care providers
- ☑ Kindergym program
- ☑ Low cost car safety seats
- ☑ Emergency resources program

HOLIDAY CLOSURES:

Closing at 12:00 PM on December 16 for Staff Holiday Luncheon AND Closed December 26th though January 3rd. Office reopens Jan. 4, 2017. Happy New Year!

DECEMBER/DICIEMBRE 2016 * JANUARY/ENERO 2017

Our thanks to Michael Clark of the Agriculture Public House at Dawn Ranch Lodge for hosting our 11th Annual Enchanted Wine Country Evening and making it a great success!

AND TO THESE INDIVIDUALS AND BUSINESSES FOR DONATING TO OUR AUCTION:

- Alcatraz Cruises
- Balletto Vineyards
- Beau Wine Tours
- Best Western
- Blue and Gold Fleet
- Boon Hotel + Spa
- Bottle Barn
- Burkes Canoes
- Chardonnay Golf Club & Vineyards
- Circle of Hands
- Cold Stone Creamery
- Field Stone Winery & Vineyards
- Fine Arts Museums of San Francisco
- Flavor Bistro
- Flowers Vineyards & Winery
- Fritz Underground Winery
- Gloria Ferrer Caves & Vineyards
- Guayaki Yerba Mate
- Guittard Chocolate Company
- Hafner Vineyards
- Eric Janzen & Megan Perkins
- Korbel Champagne Cellars
- Kozlowski Farms
- Landmark Vineyards
- Landry's Rainforest Cafe SF
- Little River Inn
- Luther Burbank Center For the Arts
- Madrona Manor Wine Country & Restaurant
- Mendo Bistro
- North Coast Brewing Co.
- Occidental Center for the Arts
- Pride Mountain Vineyards
- Ravenswood Winery
- Redwood Hill Farm & Creamery
- ReFrame Hair Gallery
- Rialto Cinemas
- Robinson Rancheria Resort & Casino
- Rochioli Winery
- Rodney Strongs Vineyard
- Russian River Vineyards
- SF Giants
- Skunk Train
- Snoopy's Home Ice
- Taft Street Winery
- Taylor Maid Farms
- The Culinary Institute of America
- The Inn at the Tides
- The Sea Ranch Golf Links
- Traditional Medicinals
- VJB Vineyards & Cellars

**FALL
FESTIVAL
FUN**

**THANKS to our
donors:
Andy's Produce
Hale's Apple Farm
Safeway
pdi Surgery Center**



**DIVERSIÓN
EN EL
FESTIVAL
DE
OTOÑO**

Basic Disaster Supplies Kit



The following items are recommended for inclusion in your basic disaster supplies kit:

- Three-day supply of non-perishable food.
- Three-day supply of water - one gallon of water per person, per day.
- Portable, battery-powered radio or television and extra batteries.
- Flashlight and extra batteries.
- First aid kit and manual.
- Sanitation and hygiene items (moist towelettes and toilet paper).
- Matches and waterproof container.
- Whistle.
- Extra clothing.
- Kitchen accessories and cooking utensils, including a can opener.
- Photocopies of credit and identification cards.
- Cash and coins.
- Special needs items, such as prescription medications, eye glasses, contact lens solutions, and hearing aid batteries.
- Items for infants, such as formula, diapers, bottles, and pacifiers.
- Other items to meet your unique family needs.

If you live in a cold climate, you must think about warmth. It is possible that you will not have heat. Think about your clothing and bedding supplies.

- Be sure to include one complete change of clothing and shoes per person, including: Jacket or coat, long pants, long sleeve shirt, sturdy shoes., hat, mittens, and scarf.
- Sleeping bag or warm blanket (per person).
- Be sure to account for growing children and other family changes.

You may want to add some of the items listed to your basic disaster supplies kit depending on the specific needs of your family.

Maintaining Your Disaster Supplies Kit

Just as important as putting your supplies together until needed. Here are some tips to keep your supplies ready and in good condition:

- Keep canned foods in a dry place where the temperature is cool.
- Store boxed food in tightly closed plastic or metal containers to protect from pests and to extend its shelf life.
- Throw out any canned good that becomes swollen, dented, or corroded.
- Use foods before they go bad, and replace them with fresh supplies.
- Place new items at the back of the storage area and older ones in the front.
- Change stored food and water supplies every six months.
- Be sure to write the date you store it on all containers.

Re-think your needs every year and update your kit as your family needs change. Keep items in airtight plastic bags and put your entire disaster supplies kit in one or two easy-to-carry containers, such as an unused trashcan, camping backpack, or duffel bag.

Botiquín Básico para Desastres

Se recomienda que los siguientes suministros sean incluidos en su botiquín básico para desastres:

- Suficiente suministros de comida no perecederos para tres días.
- Suficiente agua para tres días - un galón de agua por persona, por día.
- Un radio o televisión portátil de baterías, con baterías extra.
- Linterna con baterías extras.
- Botiquín de primeros auxilios con un manual de instrucciones.
- Artículos de sanidad y de higiene (toallitas humadas y papel higiénico).
- Fósforos y un envase a prueba de agua.
- Silbato.



- Ropa adicional.
- Accesorios de cocina y utensilios para cocinar, incluyendo un abridor de latas.
- Fotocopias de tarjetas de crédito e identificación.
- Dinero, ambos billetes y monedas.
- Artículos especiales, tales como medicina por receta, espejuelos, solución para lentes de contactos, y baterías para audífonos.
- Artículos para bebés, tales como fórmula, pañales, biberones y chupones.
- Otros artículos que sean necesarios para su familia.

Si usted vive en un clima frío, usted debe de pensar sobre la calidez. Existe la posibilidad de que haya frío. Piense en su ropa y la ropa de cama. Incluya ropa y zapatos adicionales por persona, incluyendo:

- Abrigo o chaqueta.
- Pantalones largos.
- Camisa de mangas largas.
- Zapatos fuertes.
- Sombrero, guantes y bufanda.
- Bolsa de dormir o colchas (para cada persona).



Esté conciente de que los niños crecen y la familia cambia. Consulte el Apéndice B para una lista detallada de provisiones para un desastre.

Puede ser que usted quiera añadir algunos de esos artículos dependiendo de las necesidades de su familia.

Manteniendo su Botiquín para Desastres

Es tan importante mantenerlo al día como el prepararlo. Aquí hay algunos consejos para mantener las provisiones listas y en buenas condiciones.

- Mantenga las latas en un sitio seco donde la temperatura esté fresca.
- Almacene las cajas de comida en un recipiente plástico o de metal para protegerlas contra insectos y extender la fecha de vigencia.
- Deseche cualquiera lata que no esté en buena condición.
- Utilice la comida antes que se dañe, y reemplácela con suministros frescos.
- Coloque los suministros más frescos en la parte de atrás y los más viejos al frente en almacén.
- Reemplace los suministros de comida y agua cada seis meses. Escriba la fecha en los artículos de comida cuando los almacene.

Piense sobre sus necesidades cada año y ponga al día su botiquín dependiendo de las necesidades actuales de su familia. Mantenga todos los artículos en bolsas plásticas y meta todos los suministros en recipientes que sean fáciles de cargar, como botes de basura o bolsas de acampar.

RCCS thanks the Metropolitan Church in Guerneville for its generosity in donating backpacks for children starting school and for ten Thanksgiving dinner boxes for local families in need.

RCCS STAFF UPDATES:

Welcome Rose Rodenberger, our new Fiscal Specialist, taking over Paige Allen's duties in bookkeeping. Rose will also be on duty at the front desk answering phones and greeting visitors. Welcome Rose! Maria Alvarado has moved into her new role as a Case Manager, replacing Luis Vazquez who has returned to school.

AND please take note that our Executive Director has changed her last name. She is now Soledad Figueroa! Please change your contact/address book to reflect her new email: sfigueroa@rccservices.org.

ACTUALIZACIONES DEL PERSONAL DE RCCS:

Le damos la bienvenida Rose Rodenberger, nuestra nueva Especialista Fiscal, haciéndose cargo de tareas de Paige Allen en la contabilidad. Rose también será nuestra recepcionista, contestará teléfonos y le dará la bienvenida a todos los que nos visiten. Bienvenida Rose! María Alvarado está asumiendo su nuevo papel como Manejador de Casos, tomando el lugar de Luis Vázquez, que ha regresado a la escuela. Adiós a Paige y Luis y lo mejor para los dos.

También por favor tome nota que nuestra Directora Ejecutiva ha cambiado su apellido. **Ella es ahora Soledad Figueroa! Cambie por favor la información de contacto/ correo electrónico para reflejar su nuevo nombre: sfigueroa@rccservices.org.**



EARN IT! KEEP IT! SAVE IT!
WHAT TO BRING WITH YOU TO YOUR EKS TAX APPOINTMENT:

Once you know if you qualify for free tax preparation and have scheduled your appointment, be sure to bring all of the following information to your appointment:

1. Photo ID for taxpayer and spouse
2. Original Social Security Card or ITIN for each person on tax return (no copies accepted). Contact your local Social Security office to order a copy if you cannot find yours prior to your tax appointment.
3. W-2 or 1099-MISC for all jobs held in 2015
4. All 1098's, 1099's, 1095-A's and any other tax forms
5. Voided check or savings account and routing # for directed deposit refund
6. Last year's tax return
7. Childcare provider information with name, address, etc.
8. Landlord's name, address and phone number for renter's credit



TRAIGA SU:

1. • Para cada persona en su declaración de impuestos, necesitará: identificación y tarjeta de seguro social o número ITIN
2. • Formularios W-2s para cada trabajo que tuvo en 2015
3. • 1099s, 1098s y otros comprobantes de ingreso
4. • Cuenta bancaria de ahorros y cheques para depósito directo
5. • Su declaración de impuestos del año pasado
6. • Información del proveedor de cuidado de sus hijos
7. • Nombre, dirección y número de teléfono de su arrendador
8. • Información de cobertura médica para su hogar (1095-A si lo compró de Covered CA)



WANT TO FILE THEM AT HOME FOR FREE?

Earn \$62,000 or less? You can file your taxes for free online! If you earned \$62,000 or less in 2015, you can file both your state and federal taxes with www.MyFreeTaxes.com which is a partnership among United Way, Goodwill and Walmart.

Learn more about MyFreeTaxes HERE:

<https://www.unitedwaywinecountry.org/file-for-free-online/>

Programs Service Areas

Our **Resource and Referral Program Service Delivery Area**: RCCS' R &R service area includes the West Sonoma County Union High School, Monte Rio, Guerneville, Harmony, Fort Ross, Oak Grove, Montgomery, Sonoma County portion of Shoreline Unified School and the Kashia Reservation School Districts .

For AP funding: For families in the Alternative Payment Programs, either the care must be used in, OR the family must live in, the service area described above.

For CFCC Funding: For families in the Family Child Care (CFCC) programs, child care must be provided by our contracted providers in the RCCS Family Child Care Network. **Your case manager will share network providers with you.**



Ongoing Children's Activities from RCCS

Kindergym:

- ☑ River to Coast Children's Services brings Kindergym to Forestville on Wednesday 9:45 AM to 12:15 PM. Held at the Forestville United Methodist Church, 6550 Covey Road in downtown Forestville, features activities for children 0 to 6 years (accompanied by their care givers)
- ☑ River to Coast Children's Services offers Kindergym Monday and Tuesday mornings 9:45 AM to 12:15 PM in Guerneville at the Guerneville Vets' Hall, located on the corner of 1st and Church Streets in downtown Guerneville. Features activities for children 0 to 6 years (accompanied by their care givers).

Kindergyms are FREE, but donations are accepted, Call 707.869.3613 for current schedule, or check the current RCCS newsletter online at www.rccservices.org

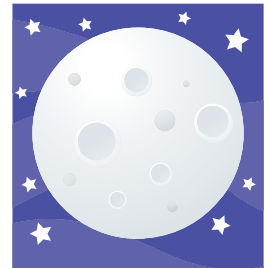
Calendar December 2016 Diciembre Calendario

- ◆ 12/5 & 6: Kindergym in Guerneville
- ◆ 12/5: Attendance sheets due in RCCS by 5 PM / Hoy es el día límite de las Hojas de Asistencia a las 5 PM
- ◆ 12/7: Kindergym in Forestville
- ◆ 12/7: Board of Directors meeting ◆ ◆ Mesa Directiva de RCCS se reúne, 6:00 PM at RCCS
- ◆ 12/12 & 13: Kindergym in Guerneville
- ◆ 10/13: Padres Abriendo Caminos (PAC) se reúne a las 6:00 PM en RCCS. Por favor llamar a Soledad al 707-869-3613 x 107
- ◆ 12/14: Kindergym in Forestville
- ◆ 12/16: OFFICE CLOSSES AT 12:00 PM / LA OFICINA CIERRA A LAS 12:00 PM
- ◆ 12/16: Provider payday ◆ ◆ Dia de pago de los proveedores
- ◆ 12/19 & 20: Kindergym in Guerneville
- ◆ 12/21: Kindergym in Forestville
- 12/26/16 - 1/3/17 : OFFICE CLOSED / OFICINA CERRADA**



Calendar January 2017 Enero Calendario

- ◆ 1/4: Kindergym in Forestville
- ◆ 1/5: Attendance sheets due in RCCS by 5 PM / Hoy es el día límite de las Hojas de Asistencia a las 5 PM
- ◆ 1/9 & 10: Kindergym in Guerneville
- ◆ 1/10: Padres Abriendo Caminos (PAC) se reúne a las 6:00 PM en RCCS. Por favor llamar a Soledad al 707-869-3613 x 107
- ◆ 1/11: Kindergym in Forestville
- ◆ 1/16: Office Closed / Oficina Cerrada observing Martin Luther King Day
- ◆ 1/16 & 17: NO KINDERGYM IN GUERNEVILLE
- ◆ 1/18: Kindergym in Forestville
- ◆ 1/18: Provider payday ◆ ◆ Dia de pago de los proveedores
- ◆ 1/23 & 24: Kindergym in Guerneville
- ◆ 1/25: Kindergym in Forestville
- ◆ 1/25: Board of Directors meeting ◆ ◆ Mesa Directiva de RCCS se reúne, 6:00 PM at RCCS
- ◆ 1/30 & 31: Kindergym in Guerneville



River to Coast Children's Services

Staff and their phone number extensions.

(707) 869-3613

- Soledad Figueroa (Executive Director) 111
- Agnese Daniel (Fiscal Director) 106
- Rose Rodenberger (Fiscal Assistant, Front Desk) 101
- Maria Elena Alvarado (Family Case Manager) 109
- Faviola Ledezma (Lead Case Manager) 114
- Julie Feingold (Child Development Program Director) 105
- Kari Wilson (Child Development Resource Specialist) 112
- Lupita Dominguez (Child Development Resource Specialist) 118
- Olga King (CDRS: Kindergym) 117
- Elaina Boyce (Community Resources & Referral Coordinator, Newsletter Editor) 104
- Sabrina Dannels, Psy.D., Registered Psychologist RPS2012411 (Call 869-3613 for appointment info)



CHILD CARE PROVIDERS INFORMATION

INFORMACIÓN DE PROVEEDORES DE CUIDADO INFANTIL

“Quality Counts”

Sonoma County has chosen to call our Quality Improvement Rating Systems (QIRS) “Quality Counts” (“QC”). We know all ECE programs impact children’s lives. QC is a program that providers can choose to participate in, and new applications are coming January 1, 2017. QC comes with coaching, training, professional development, and resources.

Quality Counts will also help families easily identify high-quality early care and education for their children. The QIRS ratings of those child care facilities participating in QC will be available to the public June 1, 2017.

This quality improvement program is available for Family Child Care Homes and Child Care Centers. For more information, please call Julie Feingold, Child Development Program Director, at 869-3613 x 105. Let’s make a profound difference in the lives of the children in our care.

Dec 2016 y Ene 2017: Boletín de Julie

"Calidad Cuenta"

El Condado de Sonoma ha optado por llamar a Quality Improvement Rating System (QIRS) "Calidad Cuenta" (“CC”). Sabemos que todos los programas de educación temprana impactan la vida de los niños. Todos los proveedores pueden elegir participar en el programa Calidad Cuenta y las nuevas aplicaciones las estarán recibiendo a partir del día 1 de enero de 2017. El programa Calidad Cuenta se compone de entrenamiento personal, en grupo, desarrollo profesional, y recursos.

El Programa Calidad Cuenta también ayudará a las familias a identificar fácilmente el cuidado infantil de alta calidad y educación para sus hijos. Los Niveles QIRS de esos centros de cuidado infantil que participaron en QIRS estarán disponibles al público el 1 de junio de, de 2017.

Este programa Calidad Cuenta está disponible para Hogares de Cuidado de Niños y Centros de Cuidado Infantil. Para obtener más información, por favor llame a Julie Feingold, Director del Programa de Desarrollo Infantil, al 869-3613 x 105. Vamos a hacer una profunda diferencia en las vidas de los niños a nuestro cuidado.

**LIKE US! Visit us on Facebook:
[facebook.com/RiverToCoastChildrensServices](https://www.facebook.com/RiverToCoastChildrensServices)**

FROM Community Care Licensing: Child Care Videos

What is a civil penalty? What forms do I need to keep in my family child care home? What are my rights as a licensee? What should parents look for when seeking child care?

The answers to these questions and other topics are now addressed in a series of child care videos that have been designed with child care providers and parents in mind. The videos contain explanations of licensing regulations and can be utilized in a variety of settings, including staff trainings. The videos can be found at <https://cclcd.childcarevideos.org/>.

SB 792 (Mendoza) Child Care Employee and Volunteer: Immunization and Tuberculosis Requirements

Effective September 1, 2016, a person may not be employed or volunteer at a child care center or a family child care home unless he or she has been immunized against influenza, pertussis, and measles or qualifies for an exemption (Health and Safety Code sections 1596.7995 (a)(1) and 1597.622 (a)(1)). In order to qualify for an exemption, a person must submit one of the following to the child care center or family child care home:

- A determination by a licensed physician, in writing, that immunization is not safe for them because of their physical condition or medical circumstances (Health and Safety Code sections 1596.7995 (b)(1) and 1597.622 (b)(1));
- or
- A determination by a licensed physician, in writing, that they have evidence of current immunity (Health and Safety Code sections 1596.7995 (b)(2) and 1597.622 (b)(2));
- or
- In regard to the influenza vaccine only, a signed declaration that he or she has declined the vaccine (Health and Safety Code sections 1596.7995 (b)(3) and 1597.622 (b)(3)).

A person is also considered exempt from the influenza vaccine if they were hired or began volunteering after December 1 of the previous year or before August 1 of the current year (Health and Safety Code sections 1596.7995 (b)(4) and 1597.622 (b)(4)). Employees, including teachers, and volunteers at child care centers, must still establish that they are in good health through a public health screening that includes a tuberculosis test (Title 22, California Code of Regulations section 101216(g); Health and Safety Code section 1597.055(a)(5)).

Teachers may now, however, provide a certificate obtained from a licensed physician or surgeon per Health and Safety Code section 121525, after a risk assessment that indicates that they are free from infectious tuberculosis as an alternative to the test (Health and Safety Code section 1597.055 (a)(5)). An adult in a family child care home while children are in care must provide evidence of a current tuberculosis clearance. An adult can obtain a certificate that indicates freedom from infectious tuberculosis (Health and Safety Code section 1597.54(d); Health and Safety Code section 121525). A adult can obtain a certificate by means of a risk assessment, negative tuberculosis test, or, upon testing positive, and X-ray of the lungs, establishing freedom from infectious tuberculosis (Health and Safety Code sections 121525, 121530). Licensing Program Analysts (LPA) will review personnel records to ensure that all employees and volunteers at a child care center or family child care home have been immunized against pertussis, measles, and influenza, unless they qualify for an exemption. LPAs will also review records to ensure compliance with the tuberculosis clearance requirement as modified.

*Please contact your local Licensing Regional office if you have additional questions.
<http://www.cclد.ca.gov/res/pdf/16APX-16.pdf>*

OUR REFERRAL POLICY

River to coast children's services' referral policy is based on respecting parental choice. Responsibility for selecting child care rests with each parent. RCCS assists parents in finding the widest range of available child care and offers information to help families evaluate available child care options. A RIVER TO COAST CHILDREN'S SERVICES referral is not a recommendation or a guarantee of quality care. Parents should carefully interview and check references of potential child care providers before leaving a child in their care.

For Information on all licensed family child care homes and centers call Community Care Licensing at 707.588.5026

River to Coast Children's Services. 707.869-3613. info@rccservices.org / www.rccservices.org

ALGUNOS PUNTOS DE NUESTRA POLIZA DE REFERENCIAS

La poliza de referencias de RIVER TO COAST CHILDREN'S SERVICES respeta la preferencia de los padres. La responsabilidad de escoger el cuidado de niños es de los padres. Asistimos a los padres a encontrar la variedad más amplia de cuidado de niños que se ofrece y ofrecemos información para evaluar el cuidado de niños. Una recomendación de RCCS no significa una garantía de calidad. Les pedimos a los padres que hagan una entrevista cuidadosa y que examinen las recomendaciones antes de que dejen un niño al cuidado de otra persona.

Padres que están buscando información acerca de quejas previas de una casa o centro con licencia para cuidar niños, pueden llamar a Community Care Licensing tel. 588-5026.

Para registrar una queja llamen al mismo número al River to Coast Children's Services. 707.869-3613.



**River to
Coast
Children's
Services**

Resources, Referrals & Support ❖ Recursos, Referencias y Apoyo

**P.O. Box 16
Guerneville, CA 95446**

U.S. POSTAGE
NON-PROFIT
GUERNEVILLE, CA 95446
PERMIT #18

RETURN SERVICE REQUESTED

Nuestra misión es cultivar el desarrollo saludable de los niños y familias en nuestra comunidad. Ofrecemos recursos, referencias, apoyo y oportunidades a los proveedores de cuidado de niños, familias y comunidades en el Oeste de Condado de Sonoma

"Our mission is to nurture the healthy development of children and families in our community. We offer resources, referrals, support and opportunities to child care providers, families and communities in western Sonoma County".

A Call for Nominations

River to Coast Children's Services is Looking for YOU! (to serve on its Board of Directors)

Board service is a wonderful way to help support the work that RCCS does for the children and families of west Sonoma County. It is also an excellent opportunity to make new connections with other community-oriented individuals who want to be a positive force for children. We extend an invitation to parents and community members to volunteer energy, experience and expertise by becoming a member of the RCCS Board of Directors.

Interested individuals please contact Soledad Figueroa at 707.869.3613 ext 111 or e-mail to: sfigueroa@rccservices.org

THANK YOU! TO OUR 2016 RCCS BOARD OF DIRECTORS:

- *Kevin Tripp, Chair*
- *Nancy Saxe, Vice Chair*
- *Bobbi Noel, Secretary*
- *Patty Gerlach, Treas.*
- *Brendan Coen*
- *Annabele Grace*
- *Sydney Griffin*
- *Daniela Hernandez*
- *Jennell Parr*
- *Brian Strong*